

# SALIDA MOUNTAIN TRAILS



## SALIDA BIKE PARK

### SPONSORSHIP OPPORTUNITIES



**SILVER SPONSOR**  
**\$5,000**

- + WEBSITE, SOCIAL MEDIA & PR RECOGNITION
- + CUSTOM DONOR PLAQUE



**GOLD SPONSOR**  
**\$10,000**

- + BRANDED CAMPAIGN HIGHLIGHTING YOUR SUPPORT
- + WEBSITE, SOCIAL MEDIA & PR RECOGNITION
- + CUSTOM DONOR PLAQUE

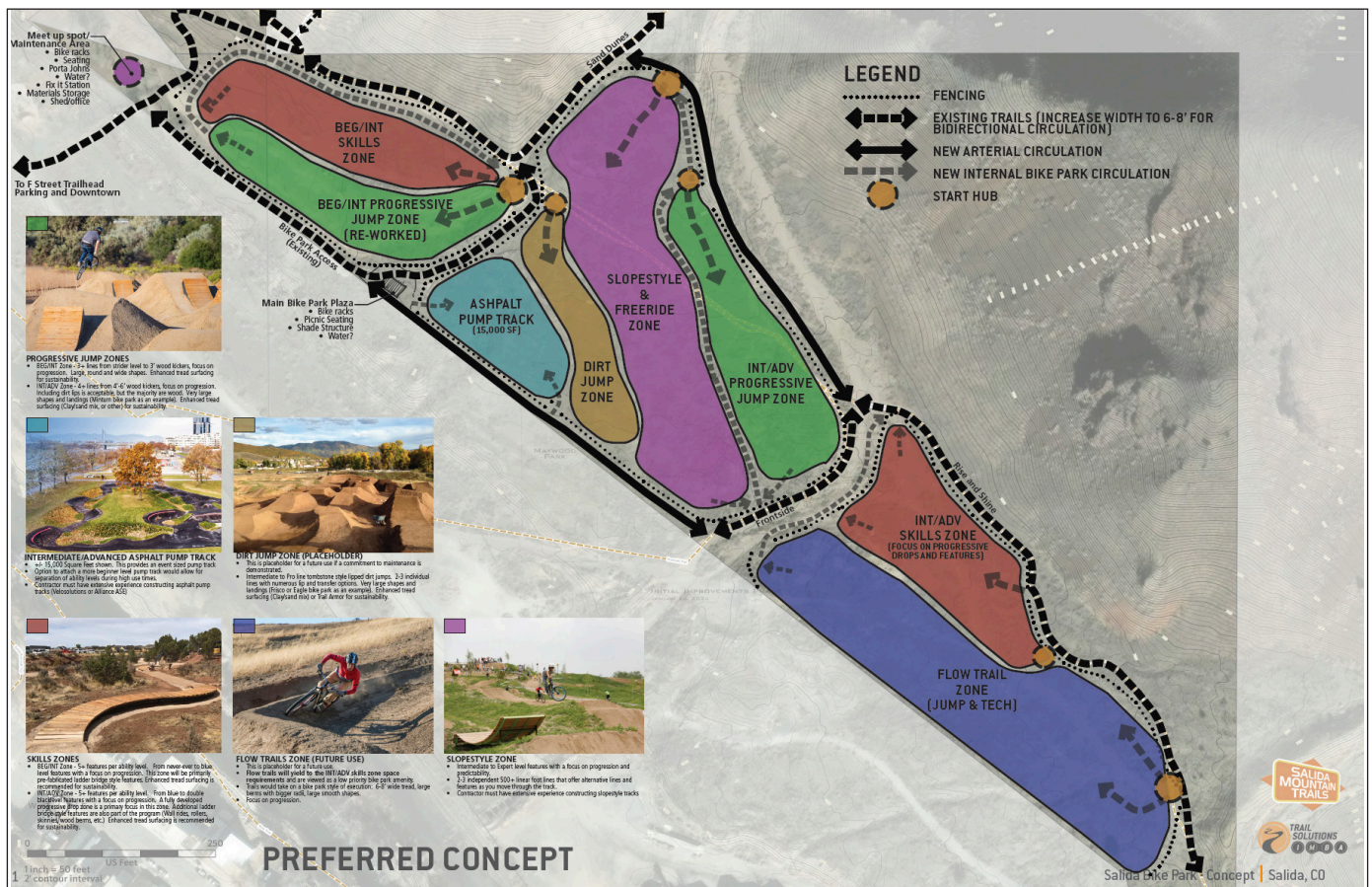


**PLATINUM SPONSOR**  
**\$25,000**

- + LOGO ON PARK SIGNAGE/ KIOSK
- + BRANDED CAMPAIGN HIGHLIGHTING YOUR SUPPORT
- + WEBSITE, SOCIAL MEDIA + PR RECOGNITION
- + CUSTOM DONOR PLAQUE

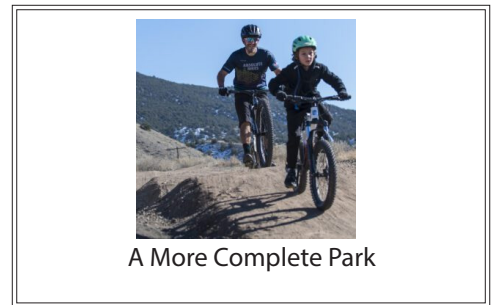
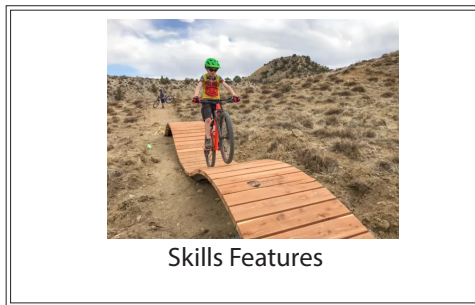
TOGETHER, WE'RE BUILDING MORE THAN A BIKE PARK -- WE'RE BUILDING COMMUNITY!

[WWW.SALIDAMOUNTAINTRAILS.ORG/BIKEPARK](http://WWW.SALIDAMOUNTAINTRAILS.ORG/BIKEPARK)



## THE VISION

WE'RE CREATING A COMPREHENSIVE BIKE PARK AT THE F STREET TRAILHEAD TO SERVE RIDERS OF ALL AGES AND ABILITIES—AND WE NEED YOUR SUPPORT TO MAKE THIS VISION A REALITY. WE ARE NOW RAISING FUNDS FOR PHASE 1, WHICH INCLUDES:



## WHY IT MATTERS

THIS PROJECT WILL TRANSFORM NEGLECTED OPEN SPACE INTO THE KEystone OF THE BELOVED ARKANSAS HILLS TRAIL SYSTEM, PROVIDING AN EASILY ACCESSIBLE PLACE FOR PEOPLE OF ALL AGES AND ABILITIES TO GAIN CONFIDENCE AND BUILD SKILLS ON BIKES. THE BIKE PARK WILL FOSTER:



### Inclusivity

Empower more people to enjoy mountain biking, trails and public lands.



### Public Health

Promote active, healthy lifestyles and create a place for social connection.



### Youth Development

Provide a low-risk environment for kids to get comfortable on bikes and have fun.



### Economic Vitality

Support our community's recreation-based economy by providing a unique attraction.

